

# EISENHOWER MIDDLE SCHOOL

47 Eyland Avenue

Succasunna, NJ 07876

Phone: (973) 584-2973

Fax: (973) 584-4529

[www.roxbury.org/ems](http://www.roxbury.org/ems)

---

Lee S. Nittel

Donna Sugarman

## EMS Students Pick-Up and Drop-Off Procedures

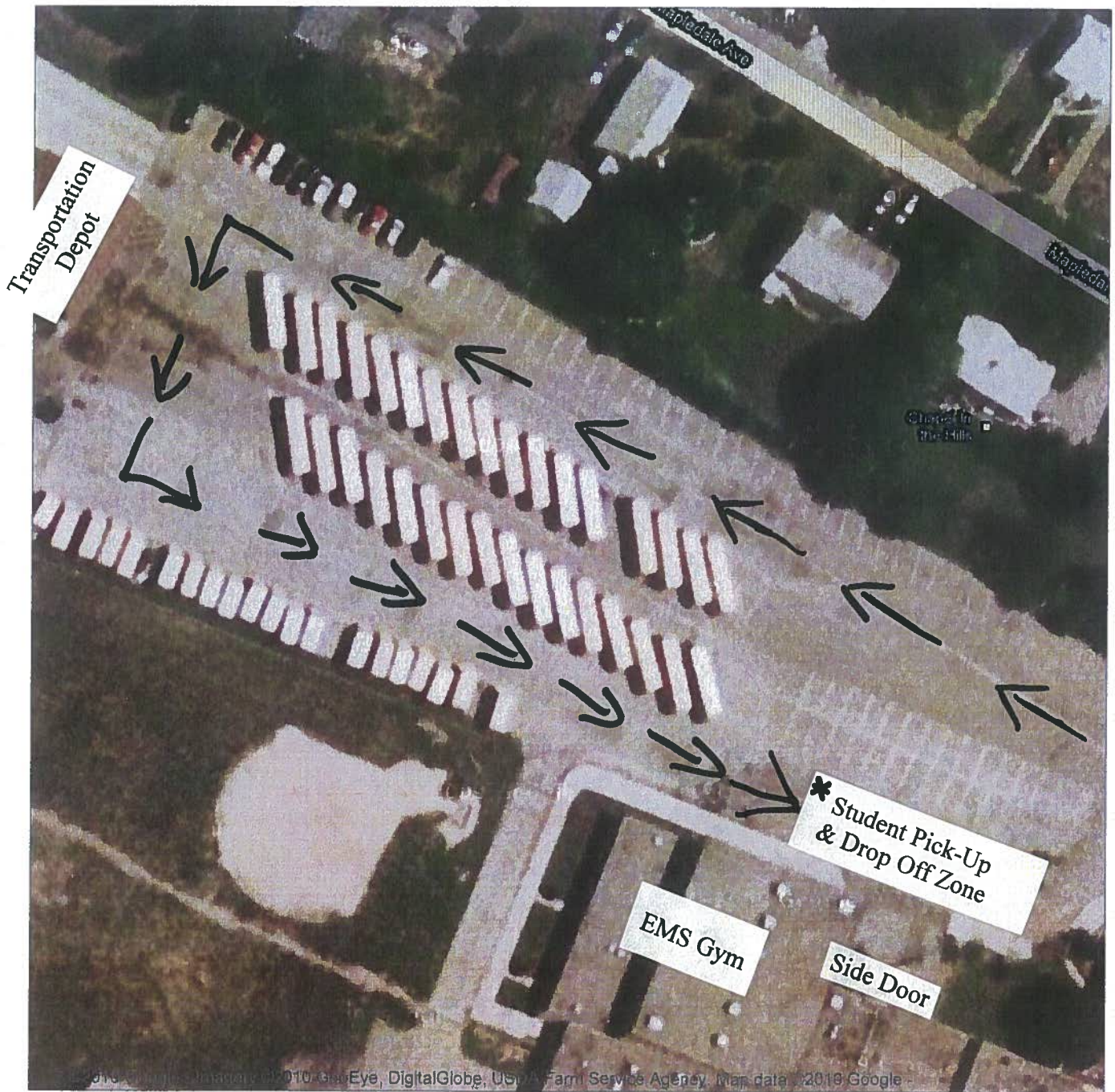
- All parents/guardians that are picking up or dropping off students, in the morning or at dismissal times, must use the side entrance of the building by the gymnasium.
- These procedures are in place for the following times:
  - **MORNING DROP OFF: 7:45 AM – 8:04 AM** (*PLEASE NOTE: Students should not arrive to school earlier than 7:45 AM, with the exception of those that have made arrangements to meet with a teacher for extra help or an early morning program. There is NO adult supervision prior to 7:45 AM*)
  - **AFTERNOON PICK UP: 2:15 PM – 2:40PM**
- All vehicles dropping off in the morning or picking up in the afternoon must enter through the EMS school entrance, stay right passed the parked busses, and make a left at the transportation building.
- After making the loop in front of the transportation building, please form ONE line to the right by the school building next to the curb.
- **MORNING DROP OFF:** All vehicles must stay in the line, and pull up to the side door to drop off. Kindly, pull as far up as possible to keep the line moving. PLEASE DO NOT let students out of your car until you are in the drop off zone next to the curb.
- **AFTERNOON PICK UP:** Form and stay in ONE line until you reach the curb in the Pick-Up Zone in front of the side entrance.

**PLEASE NOTE:** *Students will not be allowed into the roadway to get to an awaiting vehicle. Drivers must pull up to the curb. Student Safety is our primary goal!*





To see all the details that are visible on the screen, use the "Print" link next to the map.



**\* PLEASE NOTE:** Students will not be allowed into the roadway to get to an awaiting vehicle. There is only ONE lane of cars. Please be sure to pull up to the curb. Student Safety is our primary goal!