



# Kennedy Elementary School Chess Club



# Scheduling

Chess Club runs on Tuesdays during lunch periods

It takes place from the beginning of October through March

The 4<sup>th</sup> Grade Tournament starts in April

New pieces are introduced every other week:

December → introduce the Pawn & Rook

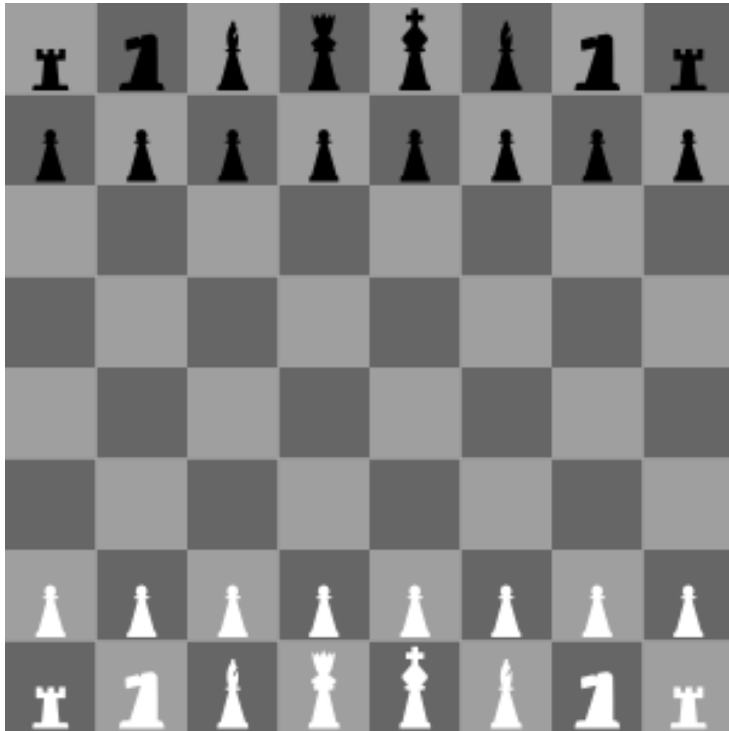
January → introduce the Bishop & Queen

February → introduce the King

March → introduce the Knight

There is *no Chess Club* on Thanksgiving week

# Chess Set Up



- ❖ Chess boards are set up in the cafeteria
- ❖ The nut free table has its own 4 sets of chess boards and they are kept in the cabinet under the coffee maker.
- ❖ There should be 4 chess boards on each table.
- ❖ We set up 32 chess boards.
- ❖ The white square should be in the lower right hand corner.
- ❖ White always goes first.

There are 16 Black pieces and 16 White pieces. For each color, there is:

- 1 King
- 1 Queen
- 2 Bishops
- 2 Knights
- 2 Rooks
- 8 Pawns



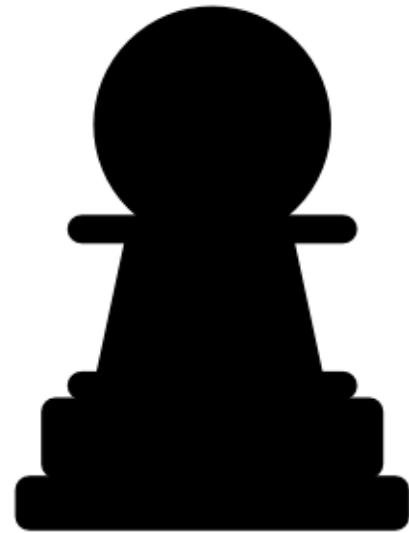
# Pawns

- ❖ There are 8 of each color.
- ❖ They get set up in the second row away from the players.
- ❖ The pawn only moves forward (cannot move backward, sideways, or diagonal)
- ❖ The pawn cannot jump over any piece.
- ❖ Each pawn, on its first move, can move either one space ahead or two spaces.
- ❖ After that it can only move one space at a time.
- ❖ The pawn can only capture another piece diagonally.

## Advanced Pawn Moves:

- Pushing your pawn – *introduced in 2<sup>nd</sup> grade*
- En Passet – *introduced in 4<sup>th</sup> grade*

Please see [www.uschess.org](http://www.uschess.org) for more information.



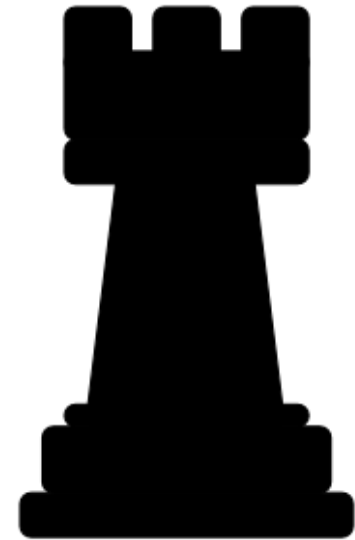
# Rooks

- ❖ There are 2 of each color.
- ❖ Looks like the castle.
- ❖ They get set up on either end of the first row (behind the pawns). One will be on the black square and one will be on the white square.
- ❖ The Rook can only move horizontally and vertically (forward and backward and side to side) And this is how it captures another piece.
- ❖ The Rook cannot jump over any piece.
- ❖ It can only move in one direction per move. So on one move you can move it forward, then your move is over. On your next turn, you can move it sideways.
- ❖ The Rook can move as many spaces as you want to move it. You can move it one space or all eight to the other side of the board.

Advanced moves:

o Castling – introduced in 3<sup>rd</sup> grade

Please see [www.uschess.org](http://www.uschess.org) for more information.



# Bishops

- ❖ There are 2 of each color.
- ❖ The pointed piece.
- ❖ They get set up on either end of the first row, three spaces in from each side. One will be on the black square and one will be on the white square.
- ❖ The Bishop can only move diagonally (so the Bishop on the white square will always stay on the white square and the Bishop on the black square will always stay on the black square.)
- ❖ It can move forward or backward It can move as many spaces as it wants.
- ❖ It can move one space or all eight spaces to the other side of the board.
- ❖ The Bishop cannot jump over any piece.



# Knights

- ❖ There are 2 of each color.
- ❖ Looks like a horse.
- ❖ They get set up in the first row, second space in (between the Rook and the Bishop).
- ❖ The Knight moves 3 spaces at a time in an "L" shape: ex. 2 spaces forward and one space to the left. OR 2 spaces to the right and one space forward.
- ❖ It can move forward or backward.
- ❖ It only captures the piece that it lands on.
- ❖ It is the only piece that can "jump" over another piece.



# Queen

- ❖ There is only 1 Queen for each color.
- ❖ The piece with the crown.
- ❖ The black Queen is placed on the fourth square from the right (on the black square). The white Queen is placed on the fifth square from the right (on the white square).

"The Queen's dress should always match her shoes" - this is a way of remembering that the Queen should be on the same color square as the color of the piece.

- ❖ The Queen is a combination of the Rook and the Bishop - it can move in all directions (horizontally, vertically, diagonally, backwards, forwards) and it can move as many spaces as it wants.
- ❖ The Queen can move in only one direction during a move.
- ❖ The Queen is considered the most powerful piece.



# King

- ❖ There is only 1 King of each color.
- ❖ The piece with the larger crown and/or cross.
- ❖ The black King is placed on the fifth square from the right, next to its Queen. The white King is placed on the fourth square from the right, also next to its Queen.
- ❖ The King is similar to the Queen in that it can move in any direction (horizontally, vertically, diagonally, backwards, and forwards).
- ❖ However, it can only move ONE space at a time.

