

Respect  
Others, Self, and Environment *by being*  
Courteous  
Kind *and*  
Safe



# Week at a Glance

for November 14<sup>th</sup> to November 18<sup>th</sup> 2022  
Jefferson Elementary School



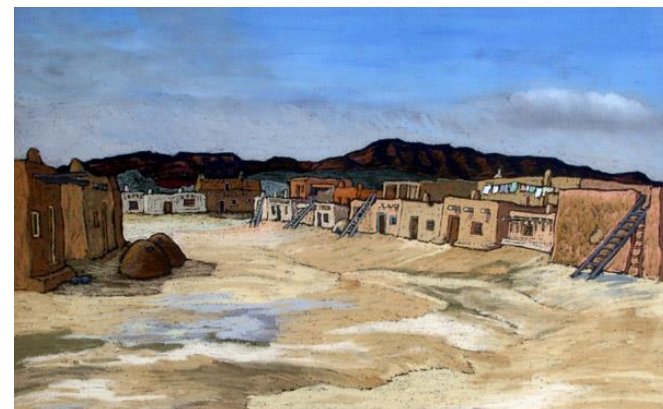
<p>14</p> 	<p>15 <b>Happy Birthday:</b> <i>Shannon Gomez Sabala</i></p>  <p><b>America Recycles Day</b> Develop a Home Recycling Plan!</p>	<p>16 <b>Happy Birthday:</b> <i>Colton Saunders</i></p> 	<p>17</p>  <p><b>PTA Family Fun Night</b> Glow in the Dark <b>BINGO</b> 6:30pm</p> <p><b>Children's Grief Awareness Day</b> <b>WEAR BLUE!</b></p>	<p>18 <b>Happy Birthday:</b> <i>Samantha Akpan</i> <i>Anthony Grave (19<sup>th</sup>)</i> <i>Frank Balestriere (20<sup>th</sup>)</i></p>  <p><b>Have a Great Weekend</b> ☺</p>
--	--	--	--	---

## Upcoming Events

- November 14<sup>th</sup>: BOE Meeting 7pm
- November 15<sup>th</sup>: America Recycles Day
- November 16<sup>th</sup>: PTA Meeting 7pm
- November 17<sup>th</sup>: Glow in the Dark BINGO 6:30
- November 17<sup>th</sup>: Children's Grief Awareness Day
- November 23<sup>rd</sup>: Early Dismissal 1:40pm
- November 24-25<sup>th</sup>: Happy Thanksgiving!

Keep up-to-date with our School Events  
[Jefferson School Calander](#)

## Native American Artwork



**Jemez Pueblo, First View, 1936** By Helmut Naumer, Sr.  
This Towa-speaking pueblo is located in the foothills of the Jemez Mountains, west of Bandelier. Ladders give access to rooms on the second level. The brown dome-shapes in the foreground are hornos or outdoor ovens.